

# MAGNETCONTROL

**Control Unit  
for Magnetic Track Brakes**



**KNORR-BREMSE**

MagnetControl is the next generation of magnetic track brake control. The modular system is used to execute and monitor functions of the magnetic track brake and predict necessary maintenance. The controller system consists of one BrainUnit and up to four PowerSwitches.

## BrainUnit

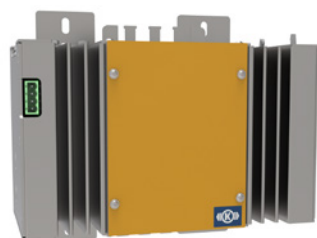


The BrainUnit provides control, diagnosis and communication functions. The software is designed to be generic.

Project-specific adaptation of the overall functionality is easily possible via a configuration file.

- Standard dimensions: 135x130x115 mm
- Standard weight: 1.6 kg
- Power consumption: 15 W

## PowerSwitch



The PowerSwitch activates and monitors each track brake. The data is transmitted to the BrainUnit for further diagnosis and communication with the brake control system.

One MagnetControl can consist of one to four PowerSwitches, depending on the vehicle category.

- Standard dimensions: 135x130x220 mm
- Standard weight: 3.85 kg
- Power consumption: 5 W

## Functionalities

|                            |   |
|----------------------------|---|
| <b>Function test</b>       | A function test is carried out regularly to check the functionality of each magnetic track brake separately. No separate visual function checks are necessary, automatic brake tests are supported and can be performed remotely from the driver's cab. |
| <b>Function monitoring</b> | MagnetControl gives early warnings of any restrictions in the functionality of the magnetic track brake. Function monitoring supports on-demand maintenance, reduction of the prescribed intervals and savings on visual inspections.                   |
| <b>Jerk control</b>        | MagnetControl monitors the performance of the magnetic track brake and minimizes the jerk while braking towards standstill.   |
| <b>Welding detection</b>   | MagnetControl evaluates brake performance during brake tests and applications and gives service instructions when weldings are detected. Suitable service intervals can be specified for the magnetic track brake.                                      |

### Knorr-Bremse Systeme für Schienenfahrzeuge GmbH

Moosacher Straße 80  
80809 Munich  
Germany  
Phone: +49 89 3547-0  
Fax: +49 89 3547-2767  
rail.knorr-bremse.com



 **KNORR-BREMSE**

 **NEW YORK AIR BRAKE**

 **IFE**

 **MERAK**

 **MICROELETTRICA**

 **SELECTRON**

 **EVAC**

 **ZELISKO**

 **RAILSERVICES**