

HYDROACT

Hydraulic Brake Calipers

Knorr-Bremse's broad range of HydroAct hydraulic brake calipers is suitable for a wide variety of rail vehicles and requirements. Their robust design ensures they are protected against harsh environmental conditions. All HydroAct calipers feature automatic wear compensation and are maintenance-friendly – even when installed in very confined spaces.



Customer benefits

- High application force within a small installation space
- Application force adjustable and mechanical emergency release
- Mounting possible to gearbox as floating support or to the bogie frame as elastic fixation or axle mounted fixation
- Maintenance-friendly thanks to completely sealed bearings and joints, no greasing necessary
- Design principles successful worldwide and service proven for many year
- Optional remote mechanical release



Applications

- Light rail vehicles
- Metros
- Monorails
- People movers



KNORR-BREMSE



Technical data

HydroAct Lever (Type HC1P50)



- Floating caliper with lever-type design
- Spring actuator brake
- Brake force per brake disc up to 100 kN
- Two hydraulic release circuits
- Maximum width of brake disc 100 mm
- Weight without bracket approx. 60 kg
- Optionally available with elastic fixing
- Optionally available with remote mechanical release

HydroAct Lever (Type HC1P32)



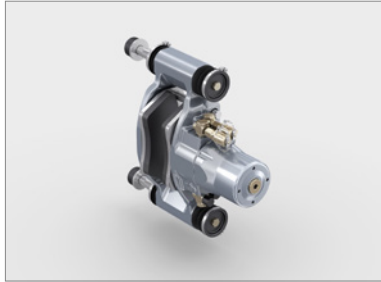
- Floating caliper with lever-type design
- Spring actuator brake
- Brake force per brake disc up to 64 kN
- Two hydraulic release circuits
- Maximum width of brake disc 60 mm
- Weight without bracket approx. 35 kg
- Optionally available with elastic fixing
- Optionally available with remote mechanical release

HydroAct Unit (Type WZ80HZ45PS80)



- Brake caliper unit
- Spring actuator brake
- Brake force per brake disc up to 90 kN
- Two hydraulic release circuits
- Maximum width of brake disc 90 mm
- Weight approx. 115 kg
- Remote mechanical release

HydroAct Floating (Type HSC1P10N)



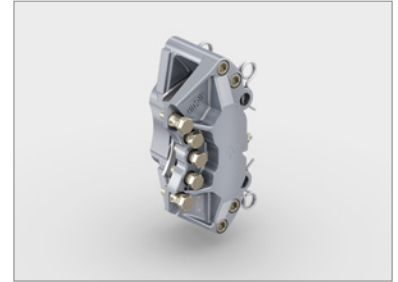
- Floating caliper frame-type design
- Spring actuator brake
- Brake force per brake disc 20 kN
- Two hydraulic release circuits
- Maximum width of brake disc 45 mm
- Weight approx. 15 kg

HydroAct Active (Type HSE1A30)



- Elastic-mounted caliper with frame-type design
- Active brake
- Brake force per brake disc 60 kN
- One hydraulic brake circuit
- Maximum width of brake disc 60 mm
- Weight approx. 37 kg
- Alternatively available as a spring actuator brake (see picture)

HydroAct Active (Type HF2A15)



- Fixed caliper
- Active brake
- Brake force per brake disc 60 kN
- One hydraulic brake circuit
- Maximum width of brake disc 60 mm
- Weight approx. 17 kg

Knorr-Bremse Systeme für Schienenfahrzeuge GmbH

Moosacher Straße 80
80809 Munich
Germany
Phone: +49 89 3547-0
Fax: +49 89 3547-2767
rail.knorr-bremse.com



KNORR-BREMSE

NEW YORK AIR BRAKE

IFE

MERAK

MICROELETTRICA

SELECTRON

EVAC

ZELISKO

RAILSERVICES