



DRYSUPPLY SMART MAX (LD-1000®)

Air Dryer System

DrySupply Smart Max, LD-1000, air dryer increases the availability of the entire train by providing clean, dry air with best-in-class life-cycle costs. Braking systems equipped with the Knorr-Bremse Air Dryer improve reliability as well as safety, so that freight rolling stock can keep up with the industry's increasing demand for on-time arrival.

Customer benefits

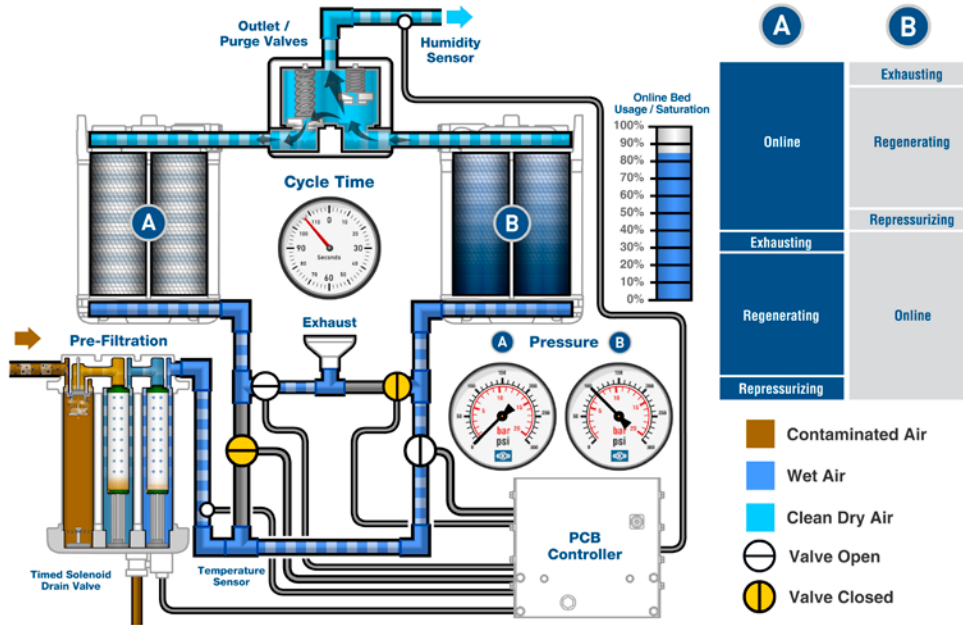
- 10-year product life prior to major overhaul due to superior air dryer pre-filtration
- Lengthened life of all downstream components
- Low life-cycle costs
- Visual indication of the proper function of the air dryer through "Blue-Eye" humidity indicator
- Prevention of freezing within the locomotive and train brake system as a result of dry air
- Optimized closed-loop regeneration minimizes purge air losses, providing significant energy savings

Applications

- Conventional locomotives
- Heavy-haul freight locomotives



KNORR-BREMSE



Inlet Air

Pressure 75–150 psig
 Temperature -40 °F (-40 °C) to 158 °F (70 °C)
 Rated flow 100 SCFM (2832 l/min) nominal
 240 SCFM (6800 l/min) maximum
 Oil contamination 40 mg/m³ (ISO 12500-1)

Outlet Air

Air quality ISO8573-1:2010
 Oil: Class 3, Particles: Class 3
 Dew point suppression >72 °F (40 °C) at 100 SCFM and
 95 °F (35 °C)

Electrical Interface

Power 72 VDC +/- 30%
 Fault-tolerant during locomotive cranking (20 V DC)
 Connector VEAM CIR06F-16S-1S-F80 or equivalent Pin "A" DC power in PIN "C" DC power ground Plating: black zinc-cobalt or electroless nickel
 Control Automatic, self-contained, no external signal required

Key features

- Minimized purge air use as well as longer component life due to fewer valve operation cycles, both as a result of intelligent regeneration control
- Easy installation, interchangeable with typical AAR unit
- Single-valve block LRU in which all valve elements controlling the draining of the 3-stage pre-filtration and the switching of the desiccant circuits are co-located; replaceable as a single module
- Required service can be completed in less than 15 minutes without disturbing electronics or pneumatics

Knorr-Bremse Systeme für Schienenfahrzeuge GmbH

Moosacher Straße 80
 80809 Munich
 Germany
 Phone: +49 89 3547-0
 Fax: +49 89 3547-2767
 rail.knorr-bremse.com

